



W40 - 4

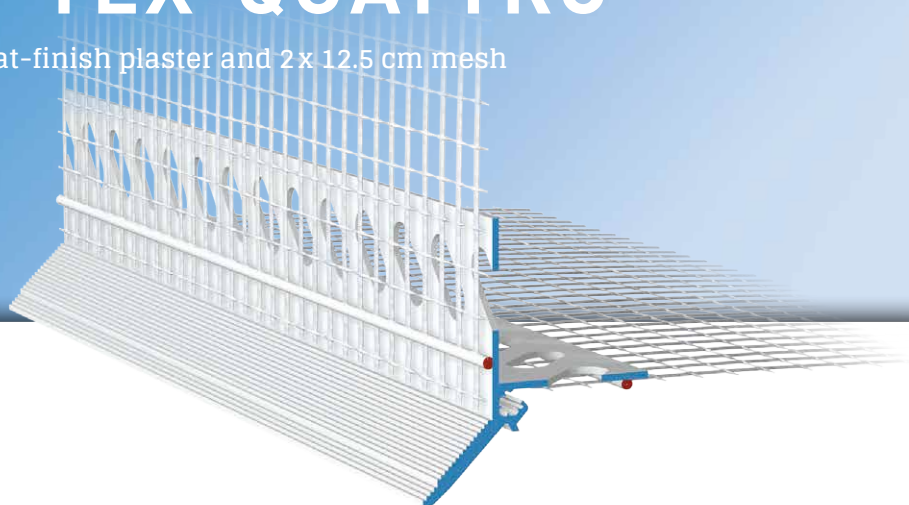
**APU**<sup>®</sup>

PROFILES FOR COMPOUND HEAT INSULATION SYSTEMS

Drip bead

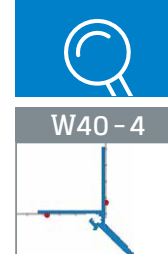
# DROP-TEX-QUATTRO

With edge for float-finish plaster and 2 x 12.5 cm mesh



The **APU drip bead DROP-TEX-QUATTRO** is used horizontally in compound heat insulation systems for recessed building elements, such as window and door jambs. The diagonal profile contour for float-finish plaster provides a reliable solution in respect of downward guidance of water.

The profile has two punched plaster bars. Welded onto every bar is a fabric strip. Each bar has a fabric overhang on one side of 10cm in the lengthways direction. To improve plaster take-up, the surfaces of the plaster edges are grooved.



W40 - 4

## Design

	ITEM NO.	LENGTH	PACKAGING UNIT	WEIGHT (per PU)
--	----------	--------	----------------	-----------------

### DROP-TEX-QUATTRO drip bead

W40 - 4

With edge for float-finish plaster and 2 x 12.5 cm mesh

W40-4-2000

2.0 m

25 bars = 50 m

10.2 kg

## Features

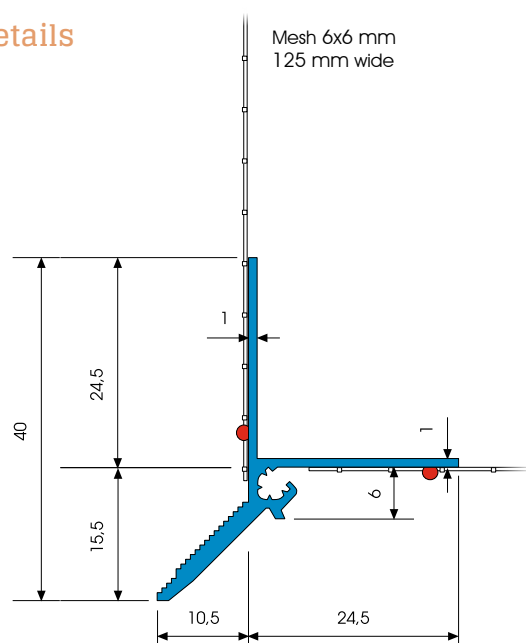
	DROP-TEX-QUATTRO DRIP BEAD
Material	<ul style="list-style-type: none"> <li>■ Rigid PVC manufactured under DIN-16941</li> </ul>
Mesh	<ul style="list-style-type: none"> <li>■ Min. 160 g/m<sup>2</sup> approved for compound heat insulation systems</li> <li>■ 2 x 12.5 cm wide – MW 6 x 6 mm</li> <li>■ Ultrasonic welded</li> </ul>
Accessories	<ul style="list-style-type: none"> <li>■ Z13-0000 Plug connectors (1 bag)</li> <li>■ Z18-4-1010i Internal corners (2 pieces)</li> <li>■ Z18-4-1010a External corners (4 pieces)</li> </ul>

## Important information

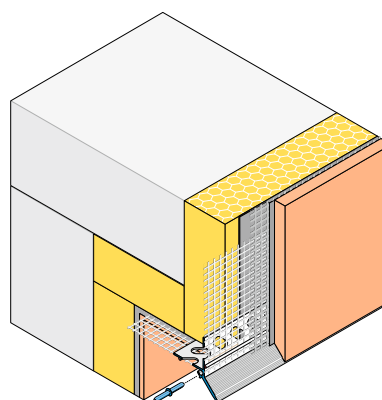
Storage	Always store profiles laid down in a dry place.
Other applications	Any applications not clearly described in the documents may be implemented only after consultation with the plaster or ETICS manufacturer.

For information on materials, areas of use, tests and correct application, please refer to our 'General Advice and Information'

## Details



Sectional drawing in mm



Application drawing