



W64 - 0



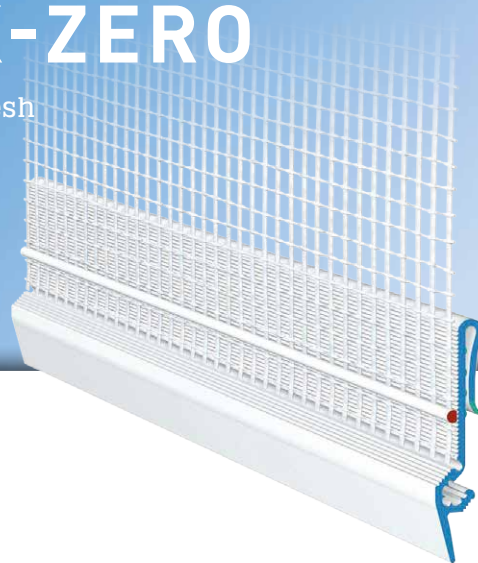
# APU®

PROFILES FOR COMPOUND HEAT INSULATION SYSTEMS

## Base clip-on profile

# REPO-TEX-ZERO

With drip edge and 12.5 cm mesh



The **APU base clip-on profile REPO-TEX-ZERO** is used in compound heat insulation systems as a termination against metal base rails in trough or T-form. In this way, any movements between plaster junction and metal profile get compensated. The ZERO base clip-on profile forms an exact plaster edge with a drip nose.

The base clip-on profile is clipped onto the existing metal base rail. The drip nose that is formed ensures that water is accurately guided away. There is a fabric window reveal bead welded onto the profile. Each bar has a fabric overhang on one side of 10cm in the lengthways direction.

The included plug connectors (Z13) and inner and outer corners (Z18-0) enable the profiles to be joined and fitted very precisely. What is created after completion of the plastering work is a clean termination of the plaster.



W64 - 0



## Design

	ITEM NO.	LENGTH	PACKAGING UNIT	WEIGHT (per PU)
--	----------	--------	----------------	-----------------

### REPO-TEX-ZERO base clip-on profile

W64 - 0	W64-0-2500	2.5 m	20 bars = 50 m	6.9 kg
---------	------------	-------	----------------	--------

## Features

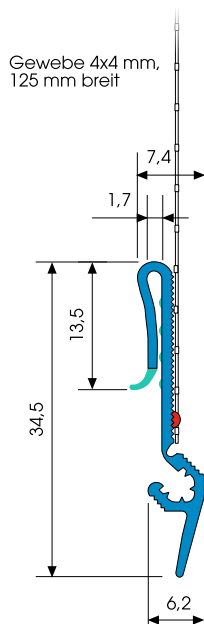
	REPO-TEX-ZERO BASE CLIP-ON PROFILE
Material	<ul style="list-style-type: none"> <li>■ Rigid PVC manufactured under DIN 16941</li> <li>■ TPE manufactured under DIN 16941</li> </ul>
Mesh	<ul style="list-style-type: none"> <li>■ Min. 160 g/m<sup>2</sup> approved for compound heat insulation systems</li> <li>■ 12.5 cm wide – MW 4 x 4 mm</li> <li>■ Ultrasonic welded</li> </ul>
Accessories	<ul style="list-style-type: none"> <li>■ Z13-0000 Plug connectors (1 bag)</li> <li>■ Z18-0-1010i Internal corners (2 pieces)</li> <li>■ Z18-0-1010a External corners (4 pieces)</li> </ul>

## Important information

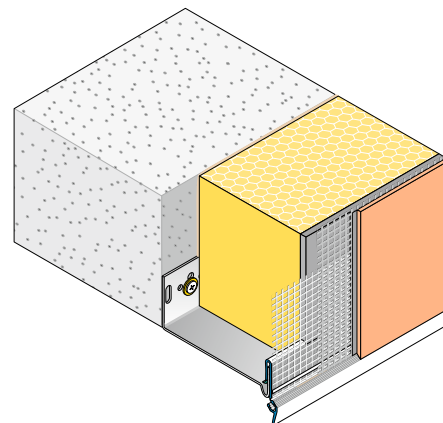
Other applications Any applications not clearly described in the documents may be implemented only after consultation with the plaster or ETICS manufacturer.

For information on materials, areas of use, tests and correct application, please refer to our 'General Advice and Information'

## Details



Sectional drawing in mm



Application drawing