



W64 - 4

**APU**[®]

PROFILES FOR COMPOUND HEAT INSULATION SYSTEMS

Base clip-on profile

REPO-TEX-QUATTRO

With edge for float-finish plaster



The **APU base clip-on profile REPO-TEX-QUATTRO** is used in compound heat insulation systems as a termination against metal base rails in trough or T-form.

In this way, any movements between plaster junction and metal profile get compensated. The base clip-on profile QUATTRO forms an exact plaster edge for float-finish plaster.

The base clip-on profile is clipped onto the existing metal base rail. The profile's sloped contour ensures that water is accurately led away. There is a fabric window reveal bead welded onto the profile. Each bar has a fabric overhang on one side of 10cm in the lengthways direction.

The included plug connectors (Z13) and inner and outer corners (Z18-4) enable the profiles to be joined and fitted very precisely.

What is created after completion of the plastering work is a clean termination of the plaster for float-finish plaster.



W64 - 4



Design

	ITEM NO.	LENGTH	PACKAGING UNIT	WEIGHT (per PU)
--	----------	--------	----------------	-----------------

REPO-TEX-QUATTRO base clip-on profile

W64 - 4	W64-4-2500	2.5 m	20 bars = 50 m	9.7 kg
---------	------------	-------	----------------	--------

With edge for float-finish plaster

Features

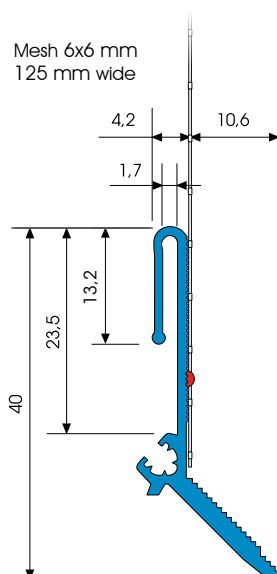
	REPO-TEX-QUATTRO BASE CLIP-ON PROFILE
Material	<ul style="list-style-type: none"> ■ Rigid PVC manufactured under DIN 16941
Mesh	<ul style="list-style-type: none"> ■ Min. 160 g/m² approved for compound heat insulation systems ■ 12.5 cm wide – MW 6x6 mm ■ Ultrasonic welded
Accessories	<ul style="list-style-type: none"> ■ Z13-0000 Plug connectors (1 bag) ■ Z18-4-1010i Internal corners (2 pieces) ■ Z18-4-1010a External corners (4 pieces)

Important information

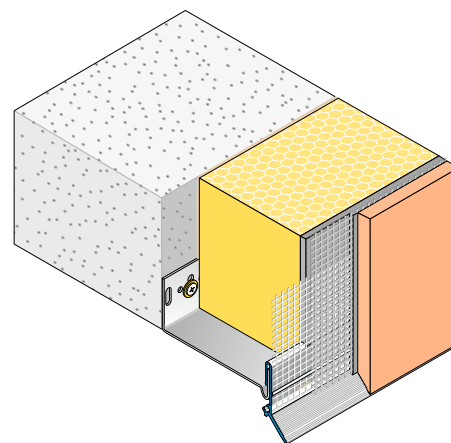
Other applications Any applications not clearly described in the documents may be implemented only after consultation with the plaster or ETICS manufacturer.

For information on materials, areas of use, tests and correct application, please refer to our 'General Advice and Information'

Details



Sectional drawing in mm



Application drawing