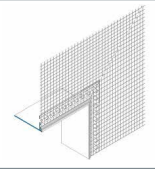




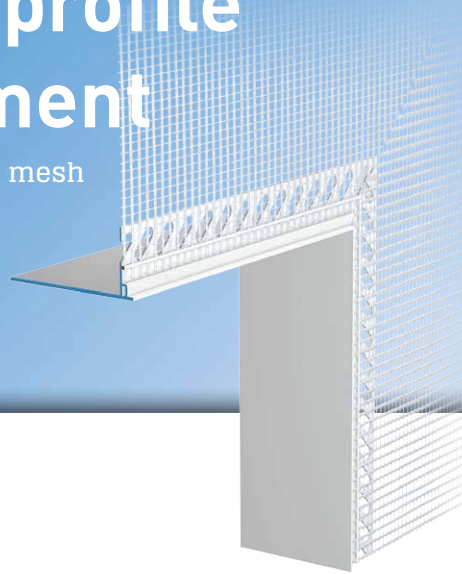
Z81

**APU**[®]

PROFILES FOR COMPOUND HEAT INSULATION SYSTEMS

Joint flank profile corner element

With straight edge and 12.5 cm mesh

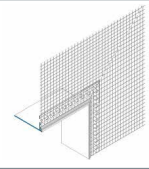


Using the **APU joint flank profile corner element**, it is quick and easy to produce clean and precise corner formations.

Using the plug connectors (Z14) supplied with them, the corner pieces are connected flush with the incoming joint flank profile W81-30 (30mm wide) or W81-60 (60mm wide). In the area where it abuts, the rear limb must be stuck over and thus sealed using suitable adhesive tape.



Z81



Design

	ITEM NO.	LENGTH	PACKAGING UNIT	WEIGHT (per PU)
--	----------	--------	----------------	-----------------

Joint flank profile - corner element

Z81-30 With straight edge and 12.5 cm mesh	Z81-0030	0.2 m	5 units	0.5 kg
Z81-60 With straight edge and 12.5 cm mesh	Z81-0060	0.2 m	5 units	0.7 kg

Features

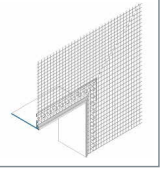
	JOINT FLANK PROFILE - CORNER ELEMENT	
Material	■ Rigid PVC manufactured under DIN-16941	
Mesh	■ Min. 160 g/m ² approved for compound heat insulation systems ■ 12.5 cm wide – MW 4x4 mm ■ Ultrasonic welded	
Accessories	■ Z14-0000 Plug connectors, small	
Suitable for	W81	Joint flank profile

Important information

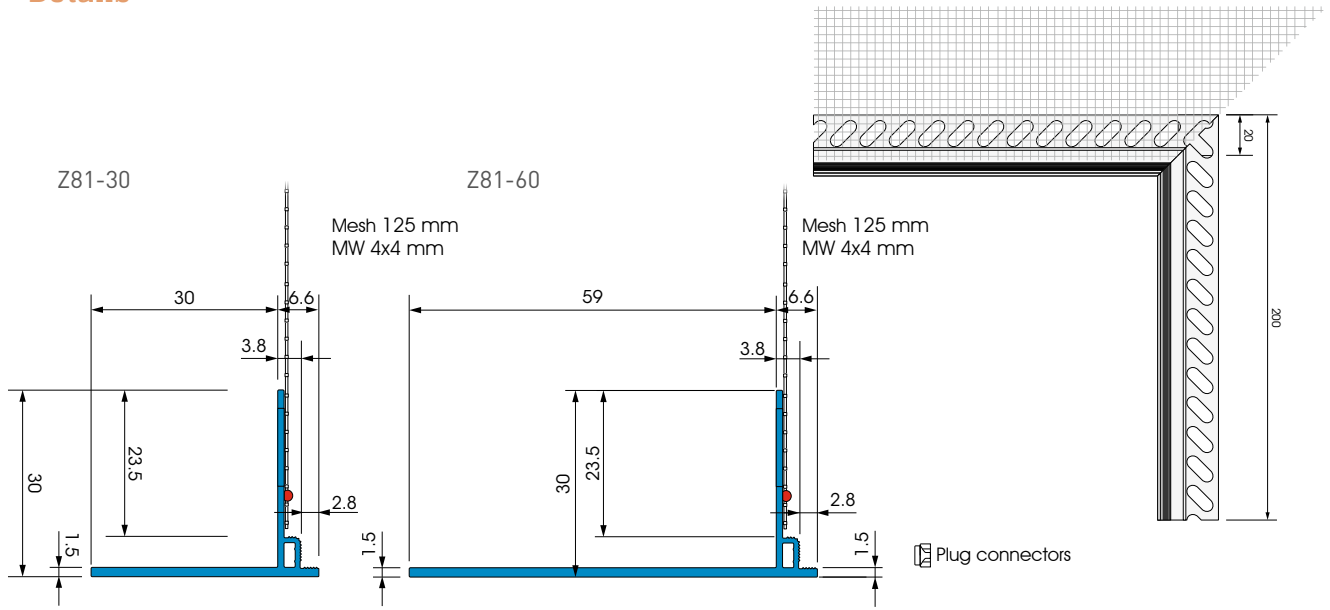
Fitting	see product documentation W81
Other applications	Any applications not clearly described in the documents may be implemented only after consultation with the plaster or ETICS manufacturer.
Seal	The sealing tape/strip is not included with the product.



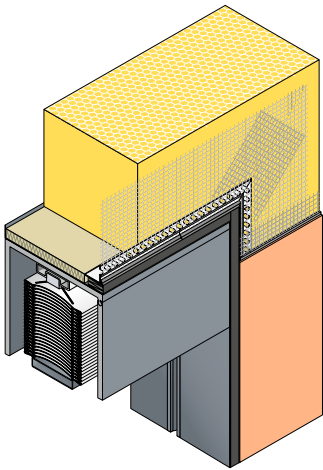
Z81



Details



Sectional drawing in mm



Application drawing