

# APU® TEST OF ADHESION

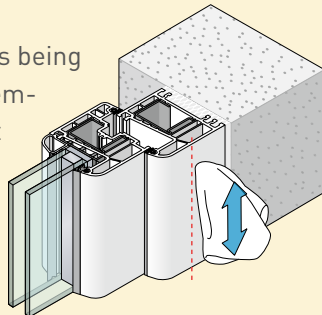
## IMPORTANT NOTE

Beads with a pressure seal (e.g. W38 - pro) offer a reliable, fast and universal plaster joint. The seal via the PUR sealing tape (BG1) is formed directly with the window or door frame. On critical sub-surfaces in particular it is always advisable to use a bead with a pressure seal and no adhesive joint. Examples of critical sub-surfaces are laminated plastic window frames, painted wooden window frames and powder-coated metal window frames. An escape of wax, oil or plasticisers can never be completely ruled out.

Before using adhesive beads you should perform an adhesion test.

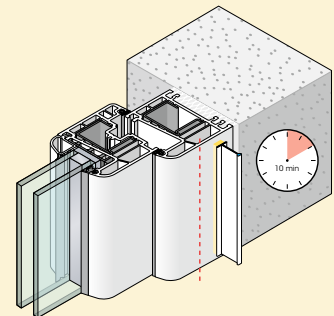
### Where

- Clean a **concealed spot** using a dry, clean cloth (and no cleaning agent).
- The sub-surface must be even, dry, free of dust and suitable for the bead to be stuck on permanently.
- Any **residues that would impair adhesion** must be removed.
- When the work is being done, the surface temperature must be at least +5 degrees and must not exceed +40 degrees.



### How

- Cut off the test bead (Z24) or a **short piece** (c. 10 cm) of the bead. Pull off the self-adhesive PE foam tape's **protective paper** and press the piece of beading **down firmly**.
- **Wait 10 minutes**, then slowly peel/pull the bead away from the sub-surface.

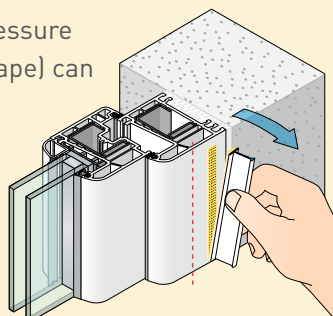


### Result

- The self-adhesive PE foam tape must remain completely stuck both to the bead and to the sub-surface. (adhesive tensile strength test).
- The sub-surface is in this case suitable for being stuck to.

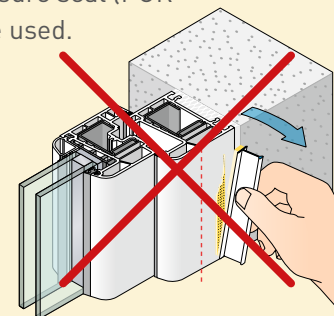
#### The sub-surface is suitable for being stuck to:

- Beads with an adhesive seal (PUR foam tape) can be used.
- Beads with a pressure seal (PUR sealing tape) can be used.



#### The sub-surface is NOT suitable for being stuck to:

- Beads with a pressure seal (PUR sealing tape) must be used.



All information subject to change. Subject to modifications.